

Minutes NHSLHA Sept. 12, 2011

Present: Vicki Chesterly, June Adinah, Stephen Colanero, Roxanne Galcia, Christopher Boothby (SKYPE)

1. Treasurer's Report is not available today. Vicki apologized but hasn't had time.
2. Website – Web Hosting is available for \$100/year (our old host charged \$107 or so). The group decided to go with this new place, which our website fellow, Edward, recommended as he uses them for other things.
3. Everyone needs to send Vicki a biography that includes:
  - a) name
  - b) degree
  - c) how long in NHSLA as member and on Board
  - d) what positions you've had on Board
  - e) do you consider yourself to have any specialties & if yes, what they are
  - f) how many years you've worked in what kind of settings
4. Survey results: 67 responses out of 789 emails sent out by Vicki to SLPs in the state. 1-3%, according to Christopher, is considered a good response. Roxanne suggested we do it via Facebook. LinkedIn is the professional version of Facebook. Roxanne says she feels more comfortable with LinkedIn. We can do this as an organization. Vicki will look into this. If we could get all these SLPs together, we could be a powerful organization indeed.

Two comments that surprised Vicki: one was thinking we were too elitist. The other comment was about, "not selling out to corporate interests".

Most folks that responded were interested in: continuing education and advocacy. SLPs, SLs, people with S/L disorders, parents of people with S/L disorders, audiologists – these are all populations that Vicki would like to reach out to and see them become members. Vicki plans to respond to the elitism/corporation issues and send out the results. Christopher suggests that there were only 2 folks that mentioned elitism/corporation concerns – he suggests he gives a summary and that we give a few ex.s that shows we are listening and already implementing the survey respondent's desires. Folks agreed with Christopher's suggestion. Roxy said she wonders if some folks might confuse us with the Dept. of Allied Health.

For the next survey: ask what folks want for continuing ed. topics, where in the state they'd like to see it happen, and if Fri. or Sat. works best. Networking was another thing people said they wanted NHSLHA to do.

5. Lauren Hardacre came to our meeting as a guest. She is doing her CFY and is running into difficulties re: caseload/workload demands that make it near impossible for her to do her job effectively and well despite her best efforts. She's contacted her school admin. and they gave her a 3-page email with suggestions for how to "make it work". These suggestions do not seem to

make fundamental change that will help in ways that Lauren would like to see.

Vicki shared that ASHA has lots of good info. re: workload analysis. When your time slots are filled up, ASHA suggests, "that's it".

How do we go about supporting SLPs who are in positions such as this, we asked....Steve suggested a round table discussion about this topic. Christopher has heard the "too many kids on my caseload story many times before so, BTS has developed a "data-driven needs analysis" which is a series of formulas that produces a series of reports that tells you to the quarter of an hour, how much time you need to do the job properly. They've found >85% of the time, the formula is accurate (they do the analysis at the beginning of the school year and again at the end). Key points Christopher said were:

- a) they use the tool this way: they take no school contract if the school district won't accept the analysis
- b) the BTS SLPs see the analysis as an assurance that they'll be able to manage what's being asked of them.
- c) Confidentiality is important. Some school districts use #s instead of student names or initials.

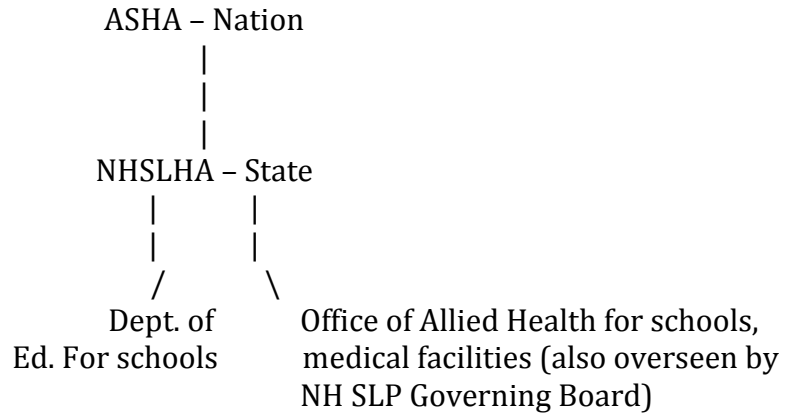
Roxi shared the thought that the analysis tool could be a great thing for schools to use to clarify what they realistically need to meet caseload demands. The "Care Plan" is the tool BTS uses with school districts that want info. as to a way to discern if they are appropriately staffed. It was mentioned that it would be a great idea to get Maren Boothby to do a talk about this tool at one of our CEU events....

The need for strength in numbers was mentioned as it relates to taking information about this problem to the State Legislature. Stephen mentioned that teachers and administrators have been taken to court for not following IEPs and they were threatened with the potential loss of their homes/possessions. This topic generated lots of discussion.

Roxi mentioned that on the flip side, the pediatric outpatient office she works at is always looking for referrals.

Lauren said she's interested in possibly joining the Board. We were pleased with this!

6. SURVEY idea. Roxi suggested a dissection of Lauren's email as a way to create another survey. How many kids do you see, what are the case management #s, are meetings during or outside of school hours, do you make your own appointments, etc. Keep the survey questions to between 5 & 10 and the last one should be: "What else do you want to tell us?!"
7. LEGISLATION: Vicki wondered: why don't all public SLPs have to be licensed? She feels that in such a small state as NH, it would be good if there was one state organization that we are overseen by. Stephen suggested a visual like this to show how things currently are:



Lauren, our guest, also shared her difficulty with coming to NH from NY and feeling the state requirements were unclear and confusing. Stephen had a similar experience with feeling confused. It was suggested that we try to clarify the situation for our website readers.

**NEXT MEETING:** Mon., Oct. 17, 2011 at NCC in the Wellness Center conference room at 6:30 pm.

Minutes taken by June Adinah